

 **BOEING**  
COMPONENT  
MAINTENANCE MANUAL

TO: ALL HOLDERS OF SECTION 43 ENTRY/SERVICE DOORS OVERCENTER MECHANISM ASSEMBLY  
COMPONENT MAINTENANCE MANUAL 52-11-83

REVISION NO. 4 DATED MAR 01/99

HIGHLIGHTS

Pages which have been added or revised are outlined below together with the highlights of the revision. Remove and insert the affected pages as listed and enter Revision No. and date on the Record of Revision Sheet.

CHAPTER/SECTION

AND PAGE NO.

701

DESCRIPTION OF CHANGE

Changed spacer ring callout from (25) to (92, 93) in par. 2.C. page 701.

**52-11-83**

HIGHLIGHTS

01.1

Page 1

Mar 01/99



SECTION 43 ENTRY/SERVICE DOORS  
OVERCENTER MECHANISM ASSEMBLY  
PART NUMBERS 143T6135-3,-4,-7,-8

COMPONENT MAINTENANCE MANUAL  
WITH  
ILLUSTRATED PARTS LIST

52-11-83

TITLE PAGE

Page 1

Oct 01/91

01.1

288920



REVISION RECORD

- Retain this record in front of manual. On receipt of revision, insert revised pages in the manual, and enter revision number, date inserted and initial.

REVISION NUMBER	REVISION DATE	DATE FILED	BY	REVISION NUMBER	REVISION DATE	DATE FILED	BY

52-11-83

REVISION RECORD

01 Page 1

Jan 01/88



TEMPORARY REVISION AND SERVICE BULLETIN RECORD

BOEING SERVICE BULLETIN	BOEING TEMPORARY REVISION	OTHER DIRECTIVE	DATE OF INCORPORATION INTO MANUAL
52-0056		PRRB12043	OCT 01/91 OCT 01/92

**52-11-83**

TR & SB RECORD

01.1

Page 1

Oct 01/92


**BOEING**  
 COMPONENT  
 MAINTENANCE MANUAL

PAGE	DATE	CODE	PAGE	DATE	CODE
52-11-83			REPAIR 1-1		
			601	OCT 01/91	01.1
			602	BLANK	
TITLE PAGE			REPAIR 2-1		
1	OCT 01/91	01.1	601	JAN 01/88	01
2	BLANK		602	BLANK	
REVISION RECORD			REPAIR 3-1		
1	JAN 01/88	01	601	OCT 01/92	01.1
2	BLANK		602	OCT 01/92	01.1
TR & SB RECORD			REPAIR 4-1		
1	OCT 01/92	01.1	601	JAN 01/88	01
2	BLANK		602	BLANK	
LIST OF EFFECTIVE PAGES			ASSEMBLY		
*1	MAR 01/99	01	*701	MAR 01/99	01.1
THRU LAST PAGE			702	JAN 01/88	01
CONTENTS			SPECIAL TOOLS		
1	MAR 01/96	01.1	901	JAN 01/88	01
2	BLANK		902	BLANK	
INTRODUCTION			ILLUSTRATED PARTS LIST		
1	JAN 01/88	01	1001	JAN 01/88	01
2	BLANK		1002	OCT 01/91	01.1
DESCRIPTION & OPERATION			1003	OCT 01/91	01.1
1	JAN 01/88	01	1004	OCT 01/91	01.1
2	BLANK		1005	OCT 01/92	01.1
DISASSEMBLY			1006	OCT 01/92	01.1
301	JAN 01/88	01	1007	OCT 01/92	01.1
302	BLANK		1008	OCT 01/91	01.1
CHECK			1009	OCT 01/92	01.1
501	JAN 01/88	01	1010	OCT 01/92	01.1
502	BLANK		1011	OCT 01/91	01.1
REPAIR-GENERAL			1012	OCT 01/91	01.1
601	OCT 01/92	01.1	1013	OCT 01/91	01.1
602	BLANK		1014	OCT 01/92	01.1
			1015	OCT 01/92	01.1
			1016	OCT 01/92	01.101
			1017	OCT 01/92	01.101
			1018	OCT 01/92	01.101

\* = REVISED, ADDED OR DELETED

**52-11-83**
 EFFECTIVE PAGES  
 LAST PAGE Page 1  
 01 Mar 01/99



TABLE OF CONTENTS

<u>Paragraph Title</u>	<u>Page</u>
Description and Operation . . . . .	1
Testing and Trouble Shooting (not applicable)	
Disassembly . . . . .	301
Cleaning. . . . . * [1]	
Check . . . . .	501
Repair. . . . .	601
Assembly. . . . .	701
Fits and Clearances (not applicable)	
Special Tools . . . . .	901
Illustrated Parts List. . . . .	1001

\* [1] Special instructions not required. Use standard industry practices.

**52-11-83**

CONTENTS  
Page 1  
Mar 01/96

01.1



## INTRODUCTION

The instructions in this manual provide the information necessary to perform maintenance functions ranging from simple checks and replacement to complete shop-type repair.

This manual is divided into separate sections:

- |  |                              |
|--|------------------------------|
| 1. Title Page                                      | 4. List of Effective Pages   |
| 2. Record of Revisions                             | 5. Table of Contents         |
| 3. Temporary Revision &<br>Service Bulletin Record | 6. Introduction              |
|  | 7. Procedures & IPL Sections |

Refer to the Table of Contents for the page location of applicable sections.

The beginning of the REPAIR section includes a list of the separate repairs and a list of applicable standard Boeing practices.

An explanation of the use of the Illustrated Parts List is provided in the Introduction to that section.

All weights and measurements used in the manual are in English units, unless otherwise stated. When metric equivalents are given they will be in parentheses following the English units.

Design changes, optional parts, configuration differences and Service Bulletin modifications create alternate part numbers. These are identified in the Illustrated Parts List (IPL) by adding an alphabetical character to the basic item number. The resulting item number is called an alpha-variant. Throughout the manual, IPL basic item number references also apply to alpha-variants unless otherwise indicated.

# 52-11-83

INTRODUCTION

01

Page 1

Jan 01/88



SECTION 43 ENTRY/SERVICE DOORS OVERCENTER MECHANISM ASSEMBLY

DESCRIPTION AND OPERATION

1. The overcenter mechanism assembly consists of two crank assemblies which pivot on a splined drive shaft and a pivot sleeve inside a housing assembly. A link connects the two crank assemblies.
2. The overcenter mechanism assembly provides an overcenter condition when the door handle is moved to the door latched position. It also prevents any force acting inboard on either the door or the trolley from influencing door handle position.
3. Leading Particulars (Approximate)

Length -- 7 inches  
Width -- 4 inches  
Height -- 12 inches  
Weight -- 15 pounds

52-11-83

DESCRIPTION & OPERATION

01

Page 1

Jan 01/88





## DISASSEMBLY

**NOTE:** Disassemble this component only as necessary to complete fault isolation, determine the serviceability of parts, perform required repairs, and restore the unit to serviceable condition.

### 1. Parts Replacement

**NOTE:** The following parts are recommended for replacement. Unless otherwise noted, actual replacement of parts may be based on in-service experience.

A. Nuts (15, 40, 85, 105, IPL Fig. 1)

### 2. Disassembly (IPL Fig. 1)

A. Remove lockwire and remove bolt (95), washer (100) and nuts (105).

B. Remove bolt (30), washer (35) and nut (40) securing link (70) and crank assembly (110). Separate link (70) from crank assembly (110).

C. Rotate crank assembly (45) to gain access to nut (15) and remove nut (15), washer (10) and bolt (5).

D. Remove shaft (20), spacer rings (25) and crank assembly (45) from housing assembly (135).

E. Remove nut (40), washer (35) and bolt (30) and separate link (70) from crank assembly (45).

**NOTE:** Do not disassemble crank assembly unless necessary for repair or replacement.

F. Remove nut (85), washers (80) and bolt (75) and remove crank assembly (110), spacer (25) and sleeve (90) from housing assembly (135).

**NOTE:** Do not disassemble crank assembly (110) or housing assembly (135) unless necessary for repair or replacement.

# 52-11-83

DISASSEMBLY

01

Page 301

Jan 01/88



CHECK

1. Check all parts for obvious defects in accordance with standard industry practices.
2. Magnetic particle check the following parts (IPL Fig. 1) per 20-20-01.
  - A. Drive shaft (20)
  - B. Crank (65, 130)
  - C. Sleeve (90)
3. Penetrant check the following parts (IPL Fig. 1) per 20-20-02.
  - A. Cap (175)
  - B. Housing (205)

52-11-83

01  
CHECK  
Page 501  
Jan 01/88

REPAIR – GENERAL1. Content

- A. Repair, refinish and replacement procedures are included in separate sections as follows:

<u>P/N</u>	<u>NAME</u>	<u>REPAIR</u>
141T6166	CRANK	1-1
141T6167	CRANK	2-1
141T6172	HOUSING	3-1
- - -	MISC PARTS REFINISH	4-1

2. Standard Practices

- A. Refer to the following standard practices as applicable, for details of procedures in individual repairs.

20-30-02 Stripping of Protective Finishes  
 20-30-03 General Cleaning Procedures  
 20-41-01 Decoding Table for Boeing Finish Codes  
 20-41-02 Application of Chemical and Solvent Resistant Finishes  
 20-43-01 Chromic Acid Anodizing  
 20-50-03 Bearing Installation and Retention

3. Materials

NOTE: Equivalent substitutes may be used.

A. Primer -- BMS 10-11 type 1 (Ref 20-60-02)

B. Sealant -- BMS 5-95 (Ref 20-60-04)

C. Grease -- MIL-G-23827 (Ref 20-60-03)

# 52-11-83

REPAIR-GENERAL

01.1

Page 601

Oct 01/92

CRANK ASSEMBLY – REPAIR 1-1

141T6166-5, -7

NOTE: Refer to REPAIR-GEN for list of applicable standard practices. For repair of surfaces which may only require stripping and restoration of original finish, refer to REFINISH instruction.

1. Bushing (120) Replacement

- A. Remove bushing.
- B. Install replacement bushing per 20-50-03.
- C. Fillet seal bushing flange with wet sealant BMS 5-95.

2. Bushings (115, 125) Replacement

- A. Remove bushings.
- B. Install bushing (115) per 20-50-03.
- C. Install bushing (125) inside bushing (115) using grease. Secure bushing (125) with masking tape for shipment and storage to prevent loss of bushing prior to installation.

3. Refinish

- A. Crank (130) -- Passivate (F-17.09) all over. Material: 17-4PH CRES (Opt: 15-5PH CRES), 180-200 ksi.

**52-11-83**

REPAIR 1-1

01.1

Page 601

Oct 01/91



CRANK ASSEMBLY – REPAIR 2-1

141T6167-3

NOTE: Refer to REPAIR-GEN for list of applicable standard practices. For repair of surfaces which may only require stripping and restoration of original finish, refer to REFINISH instruction.

1. Bushings (50, 55) Replacement

- A. Remove bushings (50, 55).
- B. Install bushing (50) then install bushing (55) per 20-50-03.

2. Bushing (60) Replacement

- A. Remove bushing.
- B. Install replacement bushing per 20-50-03.
- C. Fillet seal bushing flange with wet sealant, BMS 5-95.

3. Refinish

- A. Crank (65) -- Passivate (F-17.09) all over. Material: 15-5PH CRES, 150-170 ksi.

52-11-83

REPAIR 2-1

01

Page 601

Jan 01/88

HOUSING ASSEMBLY – REPAIR 3-1

141T6172-29, -32, -37, -38

NOTE: Refer to REPAIR-GEN for list of applicable standard practices. For repair of surfaces which may only require stripping and restoration of original finish, refer to REFINISH instruction.

1. Cap (175) Replacement

- A. Remove bolt (160), washer (165), nut (170) and cap (175).
- B. Apply wet sealant, BMS 5-95 to faying surfaces of cap (175) and housing (205).
- C. Install cap on housing and secure with bolt (160), washer (165) and nut (170).

2. Bearing (150) Replacement

- A. Remove ring (155) and bearing (150).
- B. Install replacement bearing and ring per 20-50-03.

3. Bearing (140) Replacement

- A. Remove bearing (140) and sleeve (145).

CAUTION: USE CARE WHEN HANDLING BEARING (140). BEARING CAN EASILY BE CONTAMINATED DURING HANDLING; THE SPHERICAL INNER RACE CAN BE ROTATED OUT OF POSITION, THEREBY EXPOSING THE ROLLER ELEMENTS.

- B. Install replacement bearing and sleeve per 20-50-03 using wet primer.
- C. Check that gap in sleeve (145) is 0.062-inch maximum. Fill gap with BMS 5-95 wet sealant.

**52-11-83**

REPAIR 3-1

01.1

Page 601

Oct 01/92

**4. Bearing (140A) Replacement**

- A. Remove retainer (157) and bearing (140A).
- B. Install replacement bearing (140A) with BMS 5-95 wet sealant.
- C. Install retainer (157) with rivets (158).

**5. Bearing (152) Replacement**

- A. Remove bearing (152).
- B. Install replacement bearing per 20-50-03.

**6. Refinish**

- A. Housing (205) -- Chromic acid anodize and apply one coat of primer (F-18.13) all over except omit primer in bores for bearing. Material: Al alloy.

**52-11-83**

REPAIR 3-1

01.1

Page 602

Oct 01/92

MISCELLANEOUS PARTS REFINISH – REPAIR 4-1

1. Repair of parts listed in Fig. 601 consists of restoration of the original finish.

IPL FIG. & ITEM	MATERIAL	FINISH
<u>Fig. 1</u>		
Shaft (20)	4330M steel, 220-240 ksi	Cadmium-titanium plate (F-15.01) on all exterior surfaces and apply 2 coats of primer (F-20.03) on all interior surfaces.
Ring (25)	303 steel	Cadmium plate (F-15.02) all over.
Sleeve (90)	15-5PH CRES, 150-170 ksi	Cadmium plate (F-15.02) all over except in bore.
Cap (175)	15-5PH CRES, 150-170 ksi	Cadmium plate and apply 1 coat of primer (F-16.01) all over except omit primer on 0.5 by 0.5 inch exterior surface.

Refinish Details  
 Figure 601

**52-11-83**

REPAIR 4-1

01

Page 601

Jan 01/88



ASSEMBLY1. Equipment

NOTE: Equivalent substitutes may be used.

A. Rigging pin -- 0.310 inch diameter

2. Assembly

A. Attach link (70) to crank assembly (45) using bolt (30), washer (35) and nut (40). Verify that run-on (locking) torque of nut (40) is 18-80 pound-inches. If torque is not within range, replace nut (40). Tighten matched bolt (30) and nut (40) to 150-200 pound-inches.

CAUTION: USE CARE WHEN HANDLING HOUSING ASSEMBLY (135). BEARING (140) IN HOUSING ASSEMBLY (135) CAN EASILY BE CONTAMINATED DURING HANDLING; THE SPHERICAL INNER RACE CAN BE ROTATED OUT OF POSITION, THEREBY EXPOSING THE ROLLER ELEMENTS.

B. Position crank assembly (45) and two spacer rings (25) in housing assembly (135) and install shaft (20). Locate shaft (20) so that spline teeth will point forward when component is installed. Locate spacer rings (25) and nut (40) on the spline teeth side of shaft (20).

C. Secure crank assembly (45) to shaft (20) with bolt (5), washer (10) and nut (15). Locate fasteners so that bolthead is facing outside the housing assembly (135).

D. Position crank assembly (110) and spacer rings (92, 93) in housing assembly (135) with spacer rings on the same side as spline teeth of shaft (20). Install sleeve (90) to secure crank assembly (110) in housing assembly (135).

E. Secure crank assembly (110) to sleeve (90) with bolt (75), washers (80) and nut (85). Check that sleeve (90) is centered in housing assembly (135) within 0.03 inch. Remove fasteners and reverse direction of sleeve if required.

F. Attach link (70) to crank assembly (110) using bolt (30), washers (35) and nut (40). Locate nut on the spline teeth side of shaft (20). Verify that run-on (locking) torque of nut (40) is 18-80 pound-inches. If torque is not within range, replace nut (40). Tighten matched bolt (30) and nut (40) to 150-200 pound-inches.

G. Install bolt (95), washer (100) and nuts (105) on crank assembly (110).

**52-11-83**

ASSEMBLY

01.1

Page 701

Mar 01/99

- H. Install rigging pin thru holes in crank assembly (110) and housing assembly (135) and adjust bolt (95) until bolthead just contacts cap (175) on housing assembly (135). Tighten nuts (105) to secure bolt (95).
  - I. Remove rigging pin and lockwire nuts (105) using MS20995 CRES lockwire 0.03 inch diameter per 20-50-02.
3. Store this component using standard industry practices and information contained in 20-44-02.

**52-11-83**ASSEMBLY  
Page 702  
Jan 01/88

01



SPECIAL TOOLS, FIXTURES, AND EQUIPMENT

NOTE: Equivalent substitutes may be used.

1. Rigging pin -- 0.310 inch diameter

**52-11-83**

SPECIAL TOOLS

01

Page 901

Jan 01/88

ILLUSTRATED PARTS LIST

1. This section lists and illustrates replaceable or repairable component parts. The Illustrated Parts Catalog contains a complete explanation of the Boeing part numbering system.

2. Indentures show parts relationships as follows:

Assembly

Detail Parts for Assembly

Subassembly

Attaching Parts for Subassembly

Detail Parts for Subassembly

Detail Installation Parts (Included only if installation parts may be returned to shop as part of assembly)

3. One use code letter (A, B, C, etc.) is assigned in the EFF CODE column for each variation of top assembly. All listed parts are used on all top assemblies except when limitations are shown by use code letter opposite individual part entries.

4. Letter suffixes (alpha-variants) are added to item numbers for optional parts, Service Bulletin modification parts, configuration differences (Except left- and right-hand parts), product improvement parts, and parts added between two sequential item numbers. The alpha-variant is not shown on illustrations when appearance and location of all variants of the part is the same.

5. Service Bulletin modifications are shown by the notations PRE SB XXXX and POST SB XXXX.

A. When a new top assembly part number is assigned by Service Bulletin, the notations appear at the top assembly level only. The configuration differences at detail part level are then shown by use code letter.

B. When the top assembly part number is not changed by the Service Bulletin, the notations appear at the detail part level.

6. Parts Interchangeability

Optional  
(OPT)

The parts are optional to and interchangeable with other parts having the same item number.

Supersedes, Superseded By  
(SUPSDS, SUPSD BY)

The part supersedes and is not interchangeable with the original part.

Replaces, Replaced By  
(REPLS, REPLD BY)

The part replaces and is interchangeable with, or is an alternate to, the original part.

**52-11-83**

ILLUSTRATED PARTS LIST

01

Page 1001

Jan 01/88

VENDORS

06710 LAMSON AND SESSIONS CO THE VALLEY-TODECO  
12975 BRADLEY AVENUE  
SYLMAR, CALIFORNIA 91342-3830

06725 AIR INDUSTRIES CORPORATION  
12570 KNOTT STREET  
GARDEN GROVE, CALIFORNIA 92641-3932

06950 SCREWCORP VSI CORP AEROSPACE PRODUCTS DIV FAIRCHILD IND INC  
13001 EAST TEMPLE AVE PO BOX 730  
CITY OF INDUSTRY, CALIFORNIA 91746-1417

08073 MAMCO MANUFACTURING CO INC  
1411 NORTHWEST 50TH  
SEATTLE, WASHINGTON 98107-5123

08524 DEUTSCH FASTENER CORP SEE CODE V97928

11815 CHERRY AEROSPACE FASTENERS DIV OF TEXTRON  
1224 EAST WARNER AVENUE PO BOX 2157  
SANTA ANA, CALIFORNIA 92707

15653 KAYNAR MICRODOT AEROSPACE FASTENING SYSTEM  
800 SOUTH COLLEGE BLVD PO BOX 3001  
FULLERTON, CALIFORNIA 92634-3001

15805 FLUOROCARBON CO SEATTLE DIV  
3711 SO HUDSON STREET PO BOX 18319  
SEATTLE, WASHINGTON 98118-1919

17943 FEDERAL MANUFACTURING CORPORATION  
6910 FARMDALE AVENUE  
NORTH HOLLYWOOD, CALIFORNIA 91605-6210

**52-11-83**

ILLUSTRATED PARTS LIST  
01.1 Page 1002  
Oct 01/91

VENDORS

21335 TORRINGTON CO FAFNIR BEARING DIV  
59 FIELD STREET  
TORRINGTON, CONNECTICUT 06790-4942

23294 AVALON MACHINE PRODUCTS INC  
15337 ALLEN STREET  
PARAMOUNT, CALIFORNIA 90723-4011

27624 PAUL R BRILES INC P.B. FASTENER DIV  
1700 WEST 132ND STREET PO BOX 1157  
GARDENA, CALIFORNIA 90249-2008

30163 VALENTEC DAYRON INC  
333 MAGUIRE BLVD PO BOX 140394  
ORLANDO, FLORIDA 32814-0394

38443 MRC BEARINGS  
402 CHANDLER STREET  
JAMESTOWN, NEW YORK 14701-3802

43991 FAG BEARING INCORPORATED  
118 HAMILTON AVENUE  
STAMFORD, CONNECTICUT 06904

52828 REPUBLIC FASTENER MFG CORP  
1300 RANCHO CONEJO BLVD  
NEWBURY PARK, CALIFORNIA 91320-1405

56878 SPS TECHNOLOGIES INC AEROSPACE AND INDUSTRIAL PRODUCTS DIV  
HIGHLAND AVENUE  
JENKINTOWN, PENNSYLVANIA 19046

70265 ALL POWER MANUFACTURING COMPANY  
13141 MOLETTE STREET  
SANTA FE SPRINGS, CALIFORNIA 90670-5523

**52-11-83**ILLUSTRATED PARTS LIST  
01.1 Page 1003  
Oct 01/91

VENDORS

70625 SEE V80640

72962 ELASTIC STOP NUT A DIV OF HARTFORD INDUSTRIES INC  
2330 VAUXHALL ROAD  
UNION, NEW JERSEY 07083-5038

73197 HI-SHEAR TECHNOLOGY CORP  
2600 SKYPARK DRIVE  
TORRANCE, CALIFORNIA 90509

77896 REXNORD INC BEARING OPERATION  
2400 CURTIS STREET  
DOWNERS GROVE, ILLINOIS 60515-4005

80539 SPS TECHNOLOGIES INC AEROSPACE PRODUCTS DIV  
2701 SOUTH HARBOR BOULEVARD PO BOX 1259  
SANTA ANA, CALIFORNIA 92702-1259

92215 VOI-SHAN DIV OF VSI CORP SUB OF FAIRCHILD INDUSTRIAL INC  
8463 HIGUERA STREET  
CULVER CITY, CALIFORNIA 90230

93907 TEXTRON INC CAMCAR DIV  
600 18TH AVENUE  
ROCKFORD, ILLINOIS 61101

94892 MASTER MACHINE PRODUCTS CORPORATION  
1551 SOUTH PRIMROSE AVE  
MONROVIA, CALIFORNIA 91016-4542

97928 DEUTSCH FASTENER CORP  
3969 PARAMONT BOULEVARD  
LAKEWOOD, CALIFORNIA 90712-4193

**52-11-83**

ILLUSTRATED PARTS LIST  
01.1 Page 1004  
Oct 01/91


**BOEING**  
 COMPONENT  
 MAINTENANCE MANUAL

PART NUMBER	AIRLINE PART NO.	FIG.	ITEM	TTL REQ
AN960C10L		1	10	1
		1	165A	1
AN960C616		1	35	2
AN960XC10L		1	165	1
BACB10BW16		1	140A	2
		1	150	2
		1	152	4
BACB28AK06-027		1	55	1
BACB28AK08021		1	115	2
BACB28X6E020		1	60	1
		1	120	2
BACB28Y6E027		1	125	2
BACB28Y9E021		1	50	1
BACB30LT3U7		1	160	1
BACB30LT6U20		1	30	2
BACB30MY6K20		1	5	1
BACB30NM3K7		1	160A	1
BACB30NR3K20		1	75	1
BACN10JC3CM		1	15	1
		1	85	1
		1	170	1
BACN10JC6CM		1	40	2
BACN10JP3A		1	200	2
BACN10JP3C		1	195	2
BACN10JP4C		1	185	8
BACN10YR3CM		1	170A	1
BACR12Y49		1	155	2
BACR15BB6AD7		1	158	6
BACR15CE3D		1	190	8
BACR15DR3D		1	180	16
BRM200A3		1	200	2
BRM300A3		1	195	2
BRM300A4		1	185	8

52-11-83

 ILLUSTRATED PARTS LIST  
 01.1 Page 1005  
 Oct 01/92



PART NUMBER	AIRLINE PART NO.	FIG.	ITEM	TTL REQ
B30MY6K20		1	5	1
DDR6-85A1-501		1	70	1
HL10VAZ6-20		1	5	1
H01-3BAC		1	15	1
		1	85	1
		1	170	1
H01-6BAC		1	40	2
H52732-3CM		1	170A	1
KP16B		1	150	2
		1	152	2
KP16BFS428		1	150	2
		1	152	4
KP16BG27		1	150	2
		1	152	4
KP16B2TS		1	150	2
		1	152	4
LLKP16B		1	150	2
		1	152	4
L8006K20		1	5	1
MK1000-3BAC		1	200	2
MK3000-3BAC		1	195	2
MK3000-4BAC		1	185	8
NAS509-5		1	105	2
NAS565-31		1	95	1
NAS620A10L		1	80	2
NS103197-02		1	200	2
NS103199-02		1	195	2
NS103199-048		1	185	8
NS202101SE02		1	15	1
		1	85	1
		1	170	1
RMA9201M3		1	200	2
RMA9205M3		1	195	2
RMA9205M4		1	185	8
S012T236-201		1	70	1
T6C1032JM		1	15	1
		1	85	1
		1	170	1
T8076S1032		1	200	2
T8078S1032		1	195	2
T8078S428		1	185	8
VN202A1-02		1	200	2
VN203A1-02		1	195	2

52-11-83

 ILLUSTRATED PARTS LIST  
 01.1 Page 1006  
 Oct 01/92


**BOEING**  
 COMPONENT  
 MAINTENANCE MANUAL

PART NUMBER	AIRLINE PART NO.	FIG.	ITEM	TTL REQ
VN203A1-048		1	185	8
VN303D02		1	15	1
		1	85	1
		1	170	1
102LH9075-6		1	40	2
109LH9075-3W		1	15	1
		1	85	1
		1	170	1
141T6163-2		1	20	1
141T6164-2		1	90	1
141T6164-3		1	90A	1
141T6166-5		1	110	1
141T6166-6		1	130	1
141T6166-7		1	110A	1
141T6166-8		1	130A	1
141T6167-3		1	45	1
141T6167-4		1	65	1
141T6172-29		1	135	1
141T6172-30		1	205	1
141T6172-32		1	137	1
141T6172-37		1	135A	1
		1	135B	1
141T6172-38		1	137A	1
		1	137B	1
141T6172-39		1	205A	1
141T6178-1		1	25	2
		1	92	1
		1	93	2
		1	93A	2
141T6218-1		1	175	1
141T6989-1		1	157	2
143T6135-3		1	1	RF
143T6135-4		1	3	RF
143T6135-7		1	1A	RF
143T6135-8		1	3A	RF

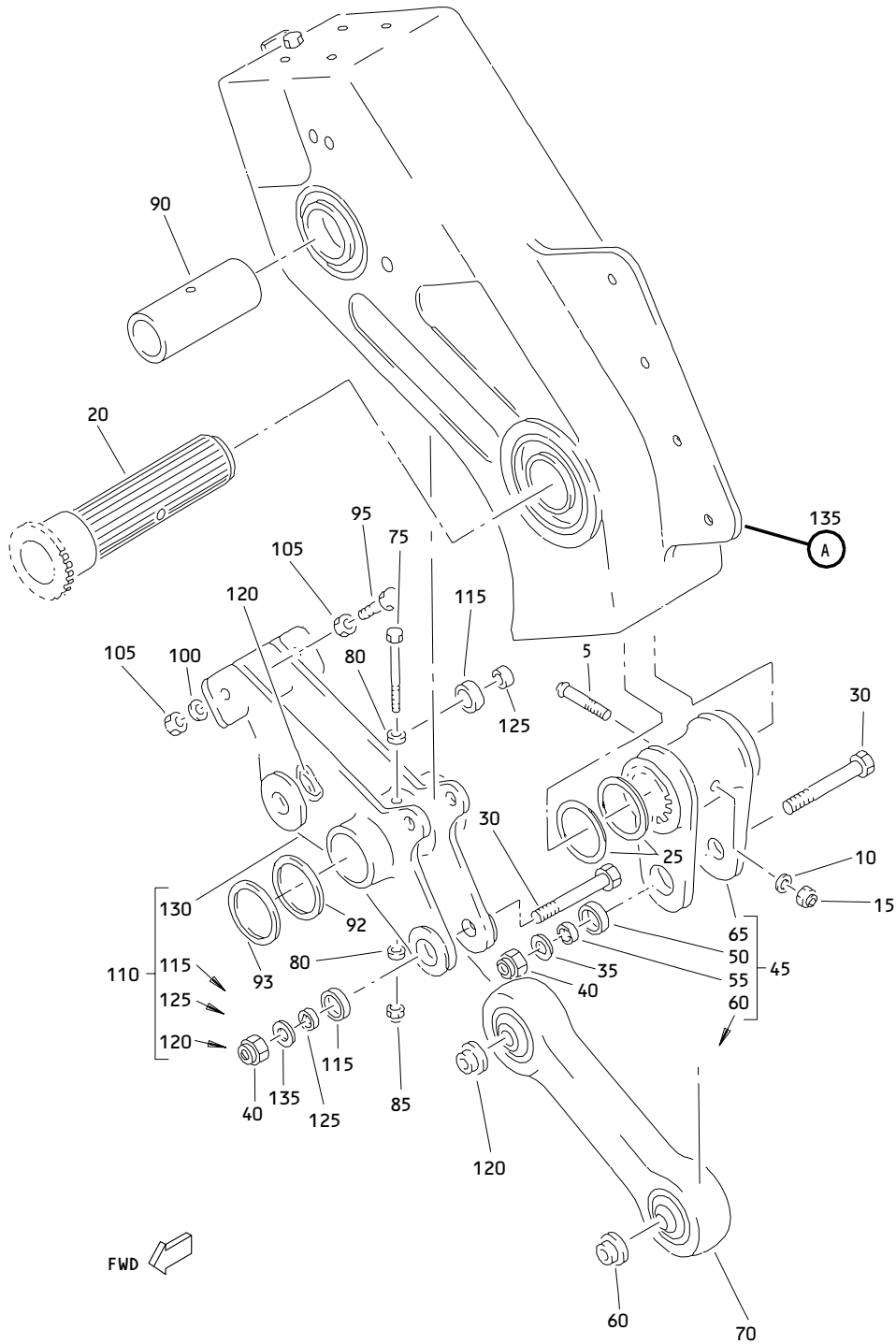
52-11-83

 ILLUSTRATED PARTS LIST  
 01.1 Page 1007  
 Oct 01/92

PART NUMBER	AIRLINE PART NO.	FIG.	ITEM	TTL REQ
146T6153-9		1	145	2
60B00178-200		1	140	2
97E02		1	15	1
		1	85	1
		1	170	1
97E064		1	40	2

**52-11-83**

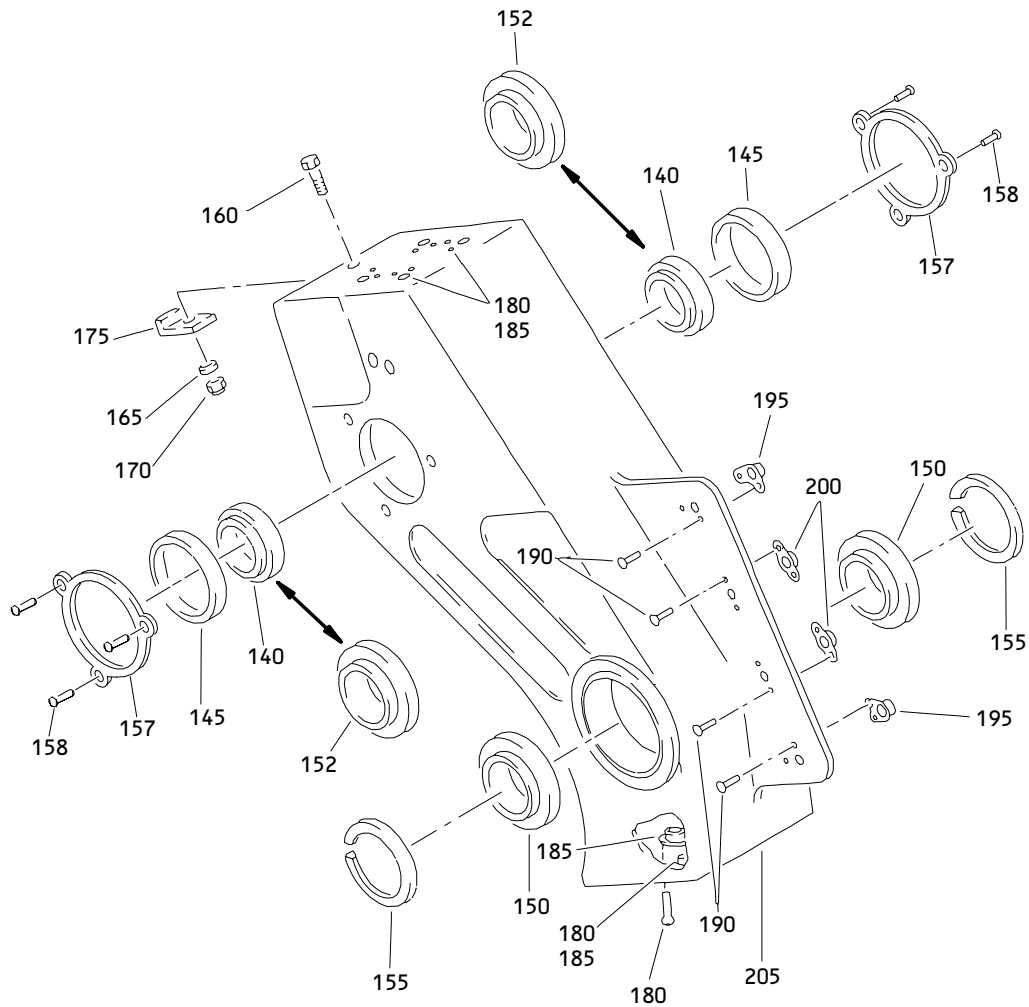
 ILLUSTRATED PARTS LIST  
 01.1 Page 1008  
 Oct 01/91



Entry/Service Doors Overcenter Mechanism Assembly  
Figure 1 (Sheet 1)

**52-11-83**

ILLUSTRATED PARTS LIST  
01.1 Page 1009  
Oct 01/92



(A)

Entry/Service Doors Overcenter Mechanism Assembly  
Figure 1 (Sheet 2)

**52-11-83**

ILLUSTRATED PARTS LIST  
01.1 Page 1010  
Oct 01/92


**BOEING**  
 COMPONENT  
 MAINTENANCE MANUAL

FIG. & ITEM	PART NO.	AIRLINE PART NUMBER	NOMENCLATURE 1234567	EFF CODE	QTY PER ASSY
01- -1	143T6135-3		MECHANISM ASSY-SECT. 43 ENTRY/SVCE DOORS OVERCTR	A	RF
R -1A	143T6135-7		MECHANISM ASSY-SECT. 43 ENTRY/SVCE DOORS OVERCTR	C	RF
-3	143T6135-4		MECHANISM ASSY-SECT. 43 ENTRY/SVCE DOORS OVERCTR	B	RF
R -3A	143T6135-8		MECHANISM ASSY-SECT. 43 ENTRY/SVCE DOORS OVERCTR	D	RF
5	HL10VAZ6-20		.BOLT- (V56878) (SPEC BACB30MY6K20) (OPT B30MY6K20 (V97928)) (OPT HL10VAZ6-20 (V73197)) (OPT HL10VAZ6-20 (V92215)) (OPT HL10VAZ6-20 (V97928)) (OPT L8006K20 (V06725)) (OPT HL10VAZ6-20 (V08524))		1
10	AN960C10L		.WASHER		1
15	H01-3BAC		.NUT- (V15653) (SPEC BACN10JC3CM) (OPT NS202101SE02 (V80539)) (OPT T6C1032JM (V11815)) (OPT VN303D02 (V92215)) (OPT 109LH9075-3W (V72962)) (OPT 97E02 (V80539))		1

52-11-83

 ILLUSTRATED PARTS LIST  
 01.1 Page 1011  
 Oct 01/91



COMPONENT  
MAINTENANCE MANUAL

FIG. & ITEM	PART NO.	AIRLINE PART NUMBER	NOMENCLATURE 1234567	EFF CODE	QTY PER ASSY
R	01-20	141T6163-2	.SHAFT-DRIVE		1
	25	141T6178-1	.RING-SPACER		2
	30	BACB30LT6U20	.BOLT- (V06710) (SPEC BACB30LT6U20) (OPT BACB30LT6U20 (V06725)) (OPT BACB30LT6U20 (V17943)) (OPT BACB30LT6U20 (V27624)) (OPT BACB30LT6U20 (V80539)) (OPT BACB30LT6U20 (V92215)) (OPT BACB30LT6U20 (V93907)) (OPT BACB30LT6U20 (V97928))		2
	35	AN960C616	.WASHER		2
	40	H01-6BAC	.NUT- (V15653) (SPEC BACN10JC6CM) (OPT 102LH9075-6 (V72962)) (OPT 97E064 (V80539))		2
	45	141T6167-3	.CRANK ASSY-DRIVE SHAFT		1
	50	BACB28Y9E021	..BUSHING- (V23294) (SPEC BACB28Y9E021) (OPT BACB28Y9E021 (V70265)) (OPT BACB28Y9E021 (V94892))		1

52-11-83


**BOEING**  
 COMPONENT  
 MAINTENANCE MANUAL

FIG. & ITEM	PART NO.	AIRLINE PART NUMBER	NOMENCLATURE 1234567	EFF CODE	QTY PER ASSY
01-55	BACB28AK06-027		..BUSHING- (V23294) (SPEC BACB28AK06-027) (OPT BACB28AK06-027 (V70265)) (OPT BACB28AK06-027 (V94892))		1
60	BACB28X6E020		..BUSHING- (V23294) (SPEC BACB28X6E020) (OPT BACB28X6E020 (V70265)) (OPT BACB28X6E020 (V94892))		1
65	141T6167-4		..CRANK		1
70	DDR6-85A1-501		.LINK- (V77896) (SPEC S012T236-201)		1
75	BACB30NR3K20		.BOLT		1
80	NAS620A10L		.WASHER		2
85	H01-3BAC		.NUT- (V15653) (SPEC BACN10JC3CM) (OPT NS202101SE02 (V80539)) (OPT T6C1032JM (V11815)) (OPT VN303D02 (V92215)) (OPT 109LH9075-3W (V72962)) (OPT 97E02 (V80539))		1

52-11-83

 ILLUSTRATED PARTS LIST  
 01.1 Page 1013  
 Oct 01/91



FIG. & ITEM	PART NO.	AIRLINE PART NUMBER	NOMENCLATURE 1234567	EFF CODE	QTY PER ASSY
01-					
R 90	141T6164-2		.SLEEVE-PIVOT	AB	1
R -90A	141T6164-3		.SLEEVE-PIVOT	CD	1
R 92	141T6178-1		.RING-SPACER (PRE SB 52-0056)	AB	1
R 93	141T6178-1		.RING-SPACER	CD	2
93A	141T6178-1		.RING-SPACER	AB	2
95	NAS565-31		.BOLT		1
100	AN960-516		.WASHER		1
105	NAS509-5		.NUT		2
110	141T6166-5		.CRANK ASSY	AB	1
R -110A	141T6166-7		.CRANK ASSY	CD	1
115	BACB28AK08021		..BUSHING- (V23294) (SPEC BACB28AK08021) (OPT BACB28AK08021 (V70625))		2
120	BACB28X6E020		..BUSHING- (V23294) (SPEC BACB28X6E020) (OPT BACB28X6E020 (V70265)) (OPT BACB28X6E020 (V94892))		2
125	BACB28Y6E027		..BUSHING- (V23294) (SPEC BACB28Y6E027) (OPT BACB28Y6E027 (V70265)) (OPT BACB28Y6E027 (V94892))		2
130	141T6166-6		..CRANK	AB	1
R -130A	141T6166-8		..CRANK	CD	1
135	141T6172-29		.HOUSING ASSY (PRE SB 52-0056)	A	1
R -135A	141T6172-37		.HOUSING ASSY	C	1
-135B	141T6172-27		.HOUSING ASSY (POST SB 52-0056)	A	1
-137	141T6172-32		.HOUSING ASSY (PRE SB 52-0056)	B	1

# 52-11-83

 ILLUSTRATED PARTS LIST  
 01.1 Page 1014  
 Oct 01/92


**BOEING**  
 COMPONENT  
 MAINTENANCE MANUAL

FIG. & ITEM	PART NO.	AIRLINE PART NUMBER	NOMENCLATURE 1234567	EFF CODE	QTY PER ASSY
R 01-					
-137A	141T6172-38		.HOUSING ASSY	D	1
-137B	141T6172-38		.HOUSING ASSY (POST SB 52-0056)	B	1
140	SAT16-24A1-501		..BEARING- (PRE SB 52-0056) (V77896) (SPEC 60B00178-200)	AB	2
140A	BACB10BW16		..BEARING- (POST SB 52-0056)	AB	2
145	146T6153-9		..SLEEVE-SPLIT	AB	2
150	KP16B		..BEARING- (V38443) (SPEC BACB10BW16) (OPT KP16B2TS (V43991)) (OPT LLKP16B (V38443)) (OPT KP16BG27 (V30163)) (OPT KP16BFS428 (V21335))	CD	2
R 152	KP16B		..BEARING- (V38443) (SPEC BACB10BW16) (OPT KP16B2TS (V43991)) (OPT LLKP16B (V38443)) (OPT KP16BG27 (V30163)) (OPT KP16BFS428 (V21335))	CD	2
155	BACR12Y49		..RING- (V08073) (SPEC BACR12Y49) (OPT BACR12Y49 (V15805))	AB	2
157	141T6989-1		..RETAINER - BEARING (POST SB 52-0056)	AB	2
158	BACR15BB6AD7		..REVETS- (POST SB 52-0056)	AB	6

52-11-83

 ILLUSTRATED PARTS LIST  
 01.1 Page 1015  
 Oct 01/92

FIG. & ITEM	PART NO.	AIRLINE PART NUMBER	NOMENCLATURE 1234567	EFF CODE	QTY PER ASSY
01-160	BACB30LT3U7		..BOLT- (V06710) (SPEC BACB30LT3U7) (OPT BACB30LT3U7 (V06725)) (OPT BACB30LT3U7 (V17943)) (OPT BACB30LT3U7 (V27624)) (OPT BACB30LT3U7 (V80539)) (OPT BACB30LT3U7 (V92215)) (OPT BACB30LT3U7 (V93907)) (OPT BACB30LT3U7 (V97928))	AB	1
R -160A	BACB30NM3K7		..BOLT- (V06710) (SPEC BACB30NM3K7) (OPT BACB30NM3K7 (V06725)) (OPT BACB30NM3K7 (V06950)) (OPT BACB30NM3K7 (V08524)) (OPT BACB30NM3K7 (V27624)) (OPT BACB30NM3K7 (V56878)) (OPT BACB30NM3K7 (V73197)) (OPT BACB30NM3K7 (V80539)) (OPT BACB30NM3K7 (V92215)) (OPT BACB30NM3K7 (V93907)) (OPT BACB30NM3K7 (V97928))	CD	1

# 52-11-83

 ILLUSTRATED PARTS LIST  
 01.101 Page 1016  
 Oct 01/92


**BOEING**  
 COMPONENT  
 MAINTENANCE MANUAL

FIG. & ITEM	PART NO.	AIRLINE PART NUMBER	NOMENCLATURE 1234567	EFF CODE	QTY PER ASSY
R 01-165	AN960XC10L		..WASHER	AB	1
-165A	AN960C10L		..WASHER	CD	1
170	H01-3BAC		..NUT- (V15653) (SPEC BACN10JC3CM) (OPT NS202101SE02 (V80539)) (OPT T6C1032JM (V11815)) (OPT VN303D02 (V92215)) (OPT 109LH9075-3W (V72962)) (OPT 97E02 (V80539))	AB	1
R -170A	H52732-3CM		..NUT- (V15653) (SPEC BACN10YR3CM)	CD	1
175	141T6218-1		..CAP		1
180	BACR15DR3D		..RIVET- (SIZE DETERMINE ON INST)		16
185	BRM300A4		..NUTPLATE- (V52828) (SPEC BACN10JP4C) (OPT MK3000-4BAC (V15653)) (OPT NS103199-048 (V80539)) (OPT RMA9205M4 (V72962)) (OPT T8078S428 (V11815)) (OPT VN203A1-048 (V92215))		8

52-11-83

 ILLUSTRATED PARTS LIST  
 01.101 Page 1017  
 Oct 01/92

FIG. & ITEM	PART NO.	AIRLINE PART NUMBER	NOMENCLATURE 1234567	EFF CODE	QTY PER ASSY
01-190	BACR15CE3D		..RIVET- (SIZE DETERMINE ON INST)		8
195	BRM300A3		..NUTPLATE- (V52828) (SPEC BACN10JP3C) (OPT MK3000-3BAC (V15653)) (OPT NS103199-02 (V80539)) (OPT RMA9205M3 (V72962)) (OPT T8078S1032 (V11815)) (OPT VN203A1-02 (V92215))		2
200	BRM200A3		..NUTPLATE- (V52828) (SPEC BACN10JP3A) (OPT MK1000-3BAC (V15653)) (OPT NS103197-02 (V80539)) (OPT RMA9201M3 (V72962)) (OPT T8076S1032 (V11815)) (OPT VN202A1-02 (V92215))		2
205	141T6172-30		..HOUSING	AB	1
R-205A	141T6172-39		..HOUSING	CD	1

# 52-11-83

 ILLUSTRATED PARTS LIST  
 01.101 Page 1018  
 Oct 01/92